

Survey By Recce Walk/ Transect Line

This is a method where our wildlife survey team needs to recce monitoring by 4 permanent transect lines. Identification criteria include mud rubbing, footprints, sound, direct sightings, and scratching marks.

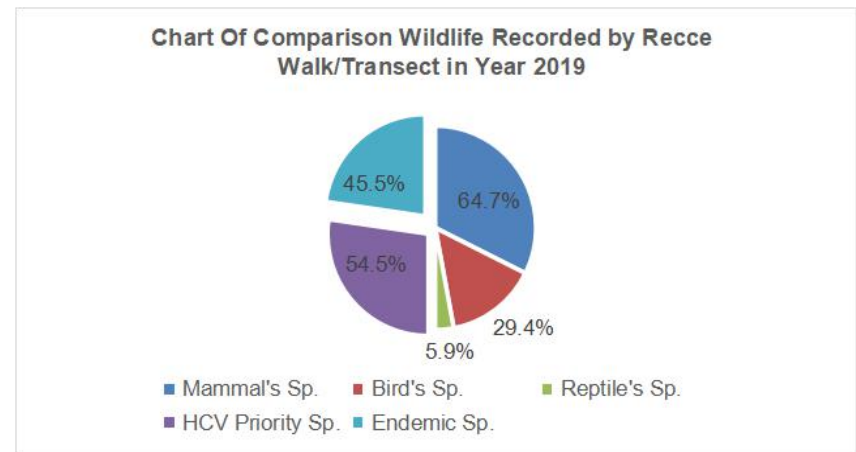
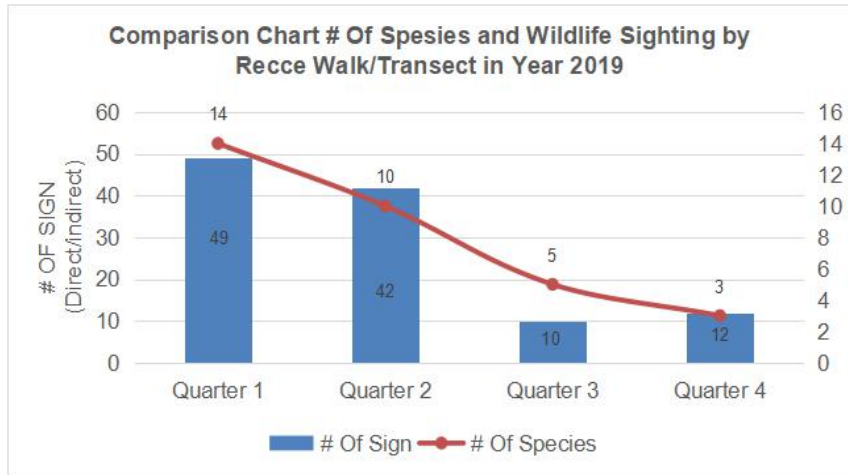
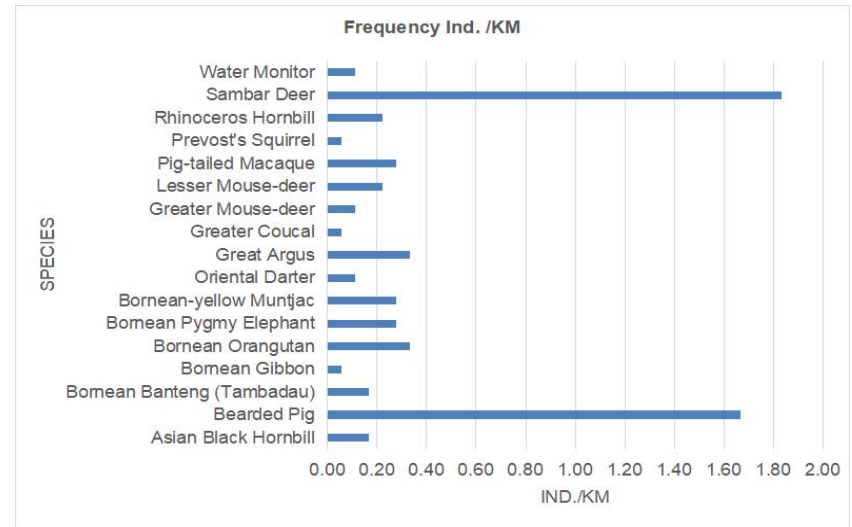
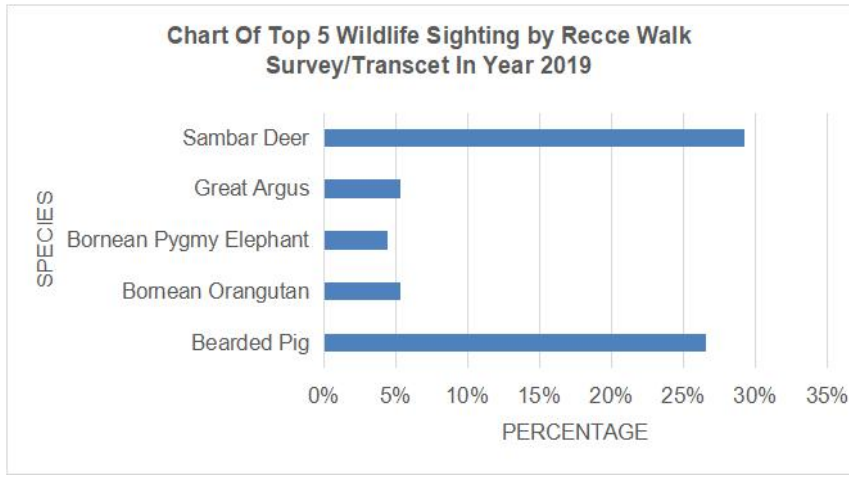
Summary of the analysis from our survey data are as follows:

- (a) Wildlife index (Index=N (Number of wildlife detected)
Distance survey
- (b) Wildlife index (Index=N (Number of wildlife detected X 100)
Total detection of all species

Table 1. 'RECCE WALK SURVEY' data between January until December 2019

No	Scientific Name	Common name	Batu Timbang	Imbok	Jumlah jarak	Index =N/Distance	Total	%	HCV	IUCN
1	<i>Anthracoceros malayanus</i>	Asian Black Hornbill	1	2	18	0.17	3	2.7%		VU
2	<i>Sus Barbatus</i>	Bearded Pig	5	25	18	1.67	30	26.5%	√	VU
3	<i>Bos Javanicus</i>	Bornean Banteng (Tambadau)	0	3	18	0.17	3	2.7%	√	EN
4	<i>Hylobates funereus</i>	Bornean Gibbon	0	1	18	0.06	1	0.9%	√	EN
5	<i>Pongo pygmaeus</i>	Bornean Orangutan	0	6	18	0.33	6	5.3%	√	CR
6	<i>Elephas maximus borneensis</i>	Bornean Pygmy Elephant	0	5	18	0.28	5	4.4%	√	EN
7	<i>Muntiacus atherodes</i>	Bornean-yellow Muntjac	0	5	18	0.28	5	4.4%		NT
8	<i>Anthracoceros malayanus</i>	Oriental Darter	0	2	18	0.11	2	1.8%		NT
9	<i>Anhinga melanogaster</i>	Great Argus	2	4	18	0.33	6	5.3%		NT
10	<i>Centropus sinensis</i>	Greater Coucal	0	1	18	0.06	1	0.9%		LC
11	<i>Tragulus napu</i>	Greater Mouse-deer	0	2	18	0.11	2	1.8%		LC
12	<i>Tragulus kanchil</i>	Lesser Mouse-deer	4	0	18	0.22	4	3.5%		LC
13	<i>Macaca nemestrina</i>	Pig-tailed Macaque	0	5	18	0.28	5	4.4%		VU
14	<i>Callosciurus prevostii</i>	Prevost's Squirrel	0	1	18	0.06	1	0.9%		LC
15	<i>Buceros rhinoceros</i>	Rhinoceros Hornbill	0	4	18	0.22	4	3.5%		NT
16	<i>Cervus unicolor</i>	Sambar Deer	7	26	18	1.83	33	29.2%	√	VU
17	<i>Varanus salvator</i>	Water Monitor	0	2	18	0.11	2	1.8%		LC
GRAND TOTAL			19	94	18	6.28	113	100%	6	

Figure 1. Graph and Wildlife Chart by 'RECCE WALK SURVEY' Method for 2019



SUMMARY

The active wildlife species recorded within NGR consists of ***Sambar Deer (29.2%), Bearded Pig (26.5%) and Bornean Orangutan (5.3%)***. Six HCV Priority Species were recorded consists of ***Bearded Pig, Sambar Deer, Bornean Pygmy Elephant, Bornean Tambdaau, Bornean Orangutan, Bornean Gibbon***. Among seventeen recorded wildlife species, five of it is a bird species. The Recce walk survey method was done 9 times in 4 permanent line transect within Mt. Magdalena FR with a total distance of 18 Km in 2019.